



# PUBLIC HEALTH

FPU BRINGS A TRADITION OF EXCELLENCE  
INTO THE PUBLIC HEALTH MINOR

**HEALTHCARE  
IS THE  
LARGEST  
GROWING  
SECTOR FOR  
EMPLOYMENT  
IN THE U.S.**

**NALINA VALAYDON '18**

Healthcare is the largest growing sector for employment in the United States. As a Public Health major, you will study social trends surrounding public healthcare and prepare to enter into a number of fields, including allied health, business, education, administration, law, medicine, and public policy.

At Franklin Pierce, you will explore coursework across multiple disciplines with the ultimate goal of improving lives and addressing health concerns at the local, national, and global level. Topics are based upon the five areas of public health knowledge defined by the Council on Education for Public Health: Biostatistics, Epidemiology, Environmental Health Sciences, Health Services Administration, and Social and Behavioral Sciences. This coursework will prepare you to pass the Certification in Public Health.

Your on-campus experience may lead to internship opportunities with prestigious organizations that have hired Franklin Pierce students, including the Make a Wish Foundation, Big Brothers Big Sisters, and the American Cancer Society.

You will graduate from the Public Health major prepared to conduct research, develop policies, provide health education, and confront domestic violence and substance abuse issues. You'll also have the opportunity to continue into graduate school through an accelerated Master of Science in Public Health program at Franklin Pierce.

# PUBLIC HEALTH

## MAJOR REQUIREMENTS

In addition to the General and Liberal Education curriculum, you must successfully complete the following courses to fulfill the major requirements.

- HCA201** Introduction to Healthcare Management
- HCA315** Epidemiology
- PUBH101** Introduction to Public Health and Health Services
- PUBH102** History of Public Health and Health Services
- PUBH201** Public Health Biology **OR**
- PUBH202** Introduction to Global Health
- PUBH310** Foundations of Environmental Health Sciences
- PUBH313** Psychological, Behavioral, and Social Issues in Public Health

### 4+1 Pathway Program

You can complete both a Bachelor of Science and Master of Public Health degree in just five years.

The accelerated degree program allows you to complete 15 credit hours of graduate-level Public Health coursework during your undergraduate senior year.

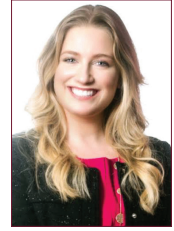
These credits replace 15 credits of required college and/or general electives, resulting in no change in the number of credits required for graduation at the bachelor's level. Once satisfactorily completed, these credits count toward both the Bachelor and Master of Public Health degrees.

The Master of Public Health program requires 48 credits of graduate-level coursework. After receipt of the bachelor's degree and acceptance to graduate school, you will complete the remaining 33 credits required for the Master of

## ALUMNI SPOTLIGHT

### Liz Squire '12

Health Communication and eHealth ORISE Fellow, Office of Disease Prevention and Health Promotion, Office of the Assistant Secretary for Health, US Department of Health and Human Services



"At Franklin Pierce I was able to explore my passion and take advantage of many opportunities, including working on the school newspaper, the television station and attending the Sundance Film Festival. I credit Franklin Pierce's supportive learning environment with my willingness to step outside of my comfort zone and take on new tasks because I know that Franklin Pierce has provided me with tools needed to succeed."

### Companies that have employed FPU graduates:



APPLY TODAY!

[franklinpierce.edu/pubhealth](http://franklinpierce.edu/pubhealth)

## PUBLIC HEALTH

Franklin Pierce University  
College of Health  
and Natural Sciences