



DOCTOR OF PHYSICAL THERAPY

FPU BRINGS A TRADITION OF EXCELLENCE INTO THE DOCTOR OF PHYSICAL THERAPY PROGRAM.

AFFORDABLE



FAST



FLEXIBLE



**COMPLETE
IN JUST
30 MONTHS**

For the past five years **Doctor of Physical Therapy (DPT)** students in Goodyear, Arizona have completed the National Physical Therapy Licensure Exam (NPTE) with a 100% pass rate and Manchester, New Hampshire students with a 98% pass rate. Franklin Pierce University prepares graduates for all areas of physical therapy through hands-on work, clinical experience, lectures, and seminars.

Study in a state-of-the-art facility in either Goodyear or Manchester. This two-and-a-half-year program includes 38 weeks of full-time clinical work. Explore courses derived from theoretical and scientific-based clinical applications that restore, maintain, and promote optimal physical function.

The CAPTE-accredited DPT program will prepare you to work in hospitals, skilled nursing and assisted living facilities, outpatient clinics, wellness and sports facilities, and private homes.

APPLY TODAY!

franklinpierce.edu/gradapply



DPT



Franklin Pierce University
College of Health and
Natural Sciences

fpuonline@franklinpierce.edu



DOCTOR OF PHYSICAL THERAPY

PROGRAM GOALS

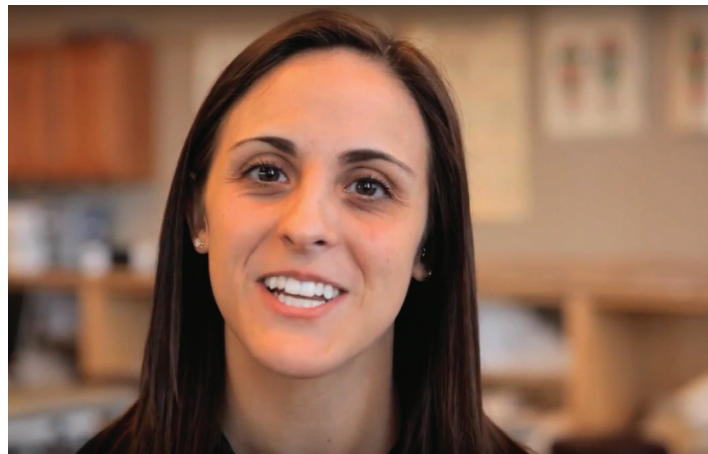
1. Be proficient to practice as effective and safe autonomous practitioners.
 2. Demonstrate commitment to the physical therapy profession.
-

ADMISSION REQUIREMENTS

- Completion of a baccalaureate degree from an accredited institution.
 - Achievement of a minimum cumulative GPA of 3.0 on a 4.0 scale.
 - Complete the Graduate Record Exam (GRE).
 - Complete 40 hours of observation or work. In order to assure understanding of the breadth of PT practice, it is recommended that observation hours include both inpatient and outpatient settings.
 - Complete the following science prerequisite courses at the science major level:
 - Human Anatomy and Physiology (6-8 credits including labs)
 - Biology (6-8 credits)
 - Chemistry (8 credits including labs)
 - Physics (8 credits including labs)
 - Complete a Statistics course
 - Complete a Psychology course (3 credits)
Note: Must be a course offered through the Psychology Department
-

APPLICATION PROCESS

The application and admissions process is the same for the Manchester and Goodyear DPT program. Applications are accepted through the Physical Therapist Centralized Application Service (PTCAS) at ptcas.org. The PTCAS application cycle opens midsummer for the following academic year.



ALUMNI IN THE SPOTLIGHT

Kendra Lajoie '15 DPT '18

After studying Biology on the Rindge campus, Kendra “had a strong connection with Franklin Pierce and wanted to keep going to the DPT program in Manchester.” She found the same support system from faculty continued from her undergraduate studies into the doctoral program. “And most of the faculty are working as physical therapists in the clinic, so we get examples of real-life clinical experience.”

Watch Kendra’s full story at franklinpierce.edu/Kendra.

Franklin Pierce offers personal support through our enrollment team and an academic advisor to assist with onboarding, paving the way for student success. Our teams are ready to help you reach your career and educational goals.